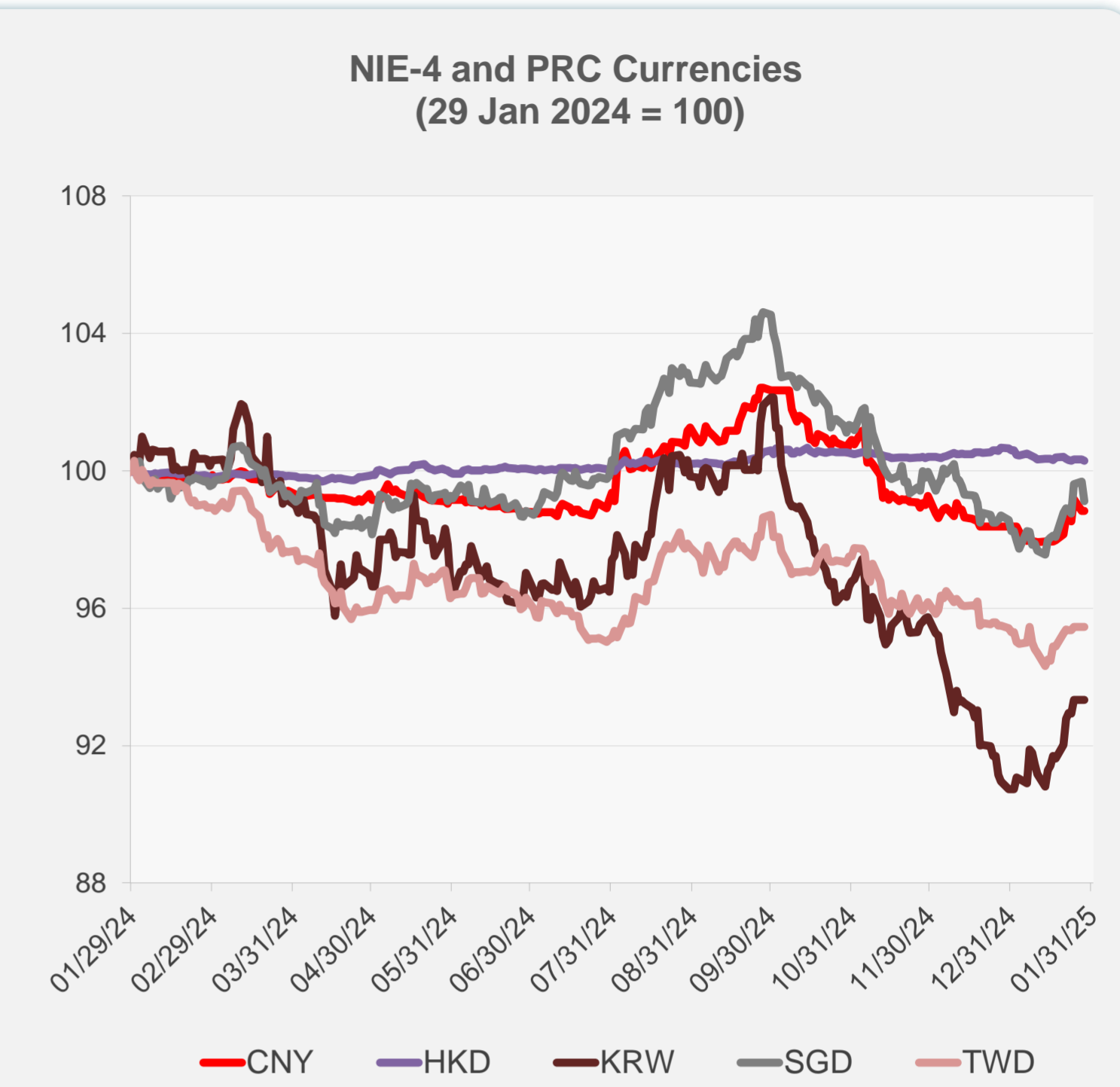
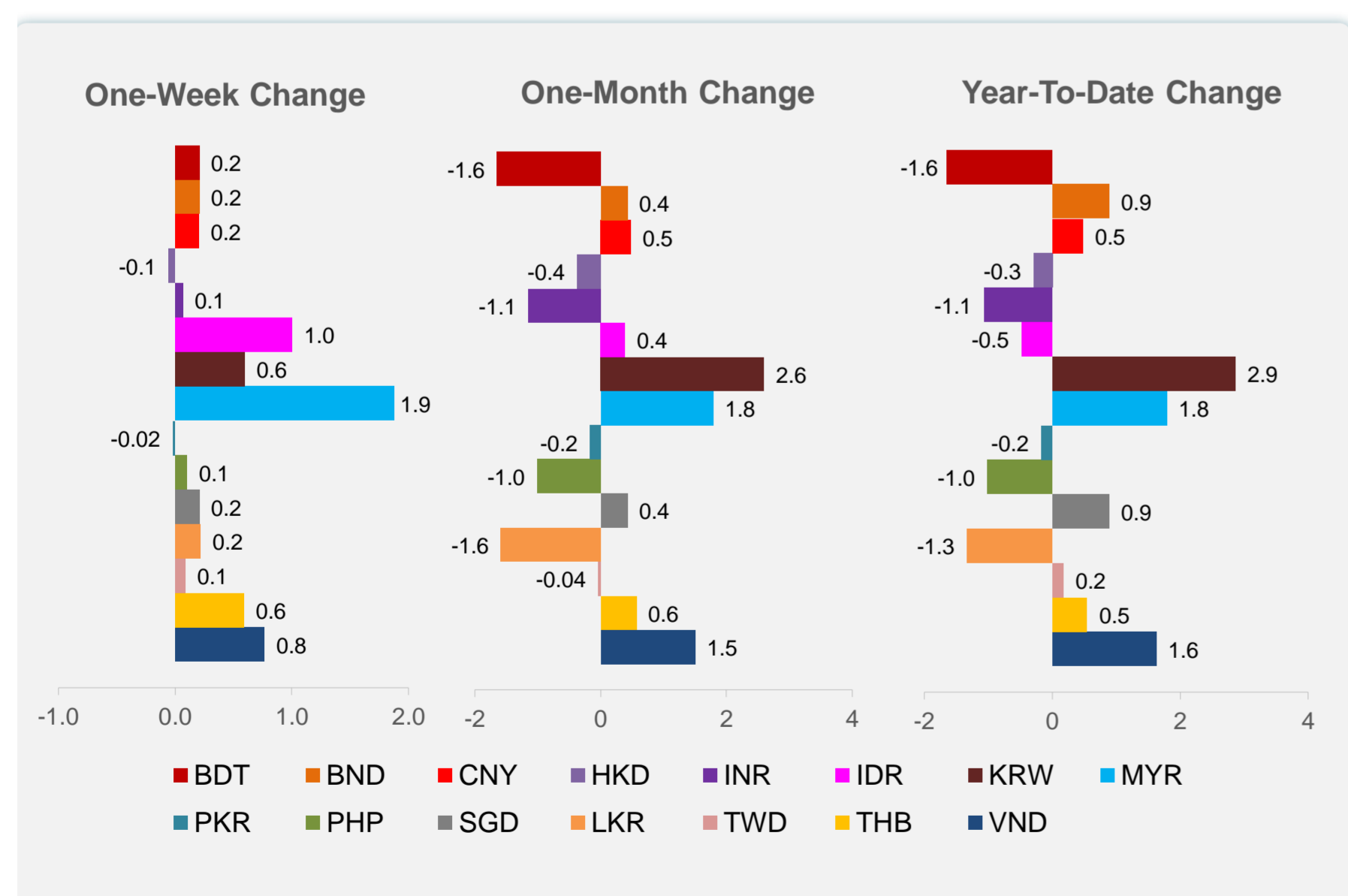
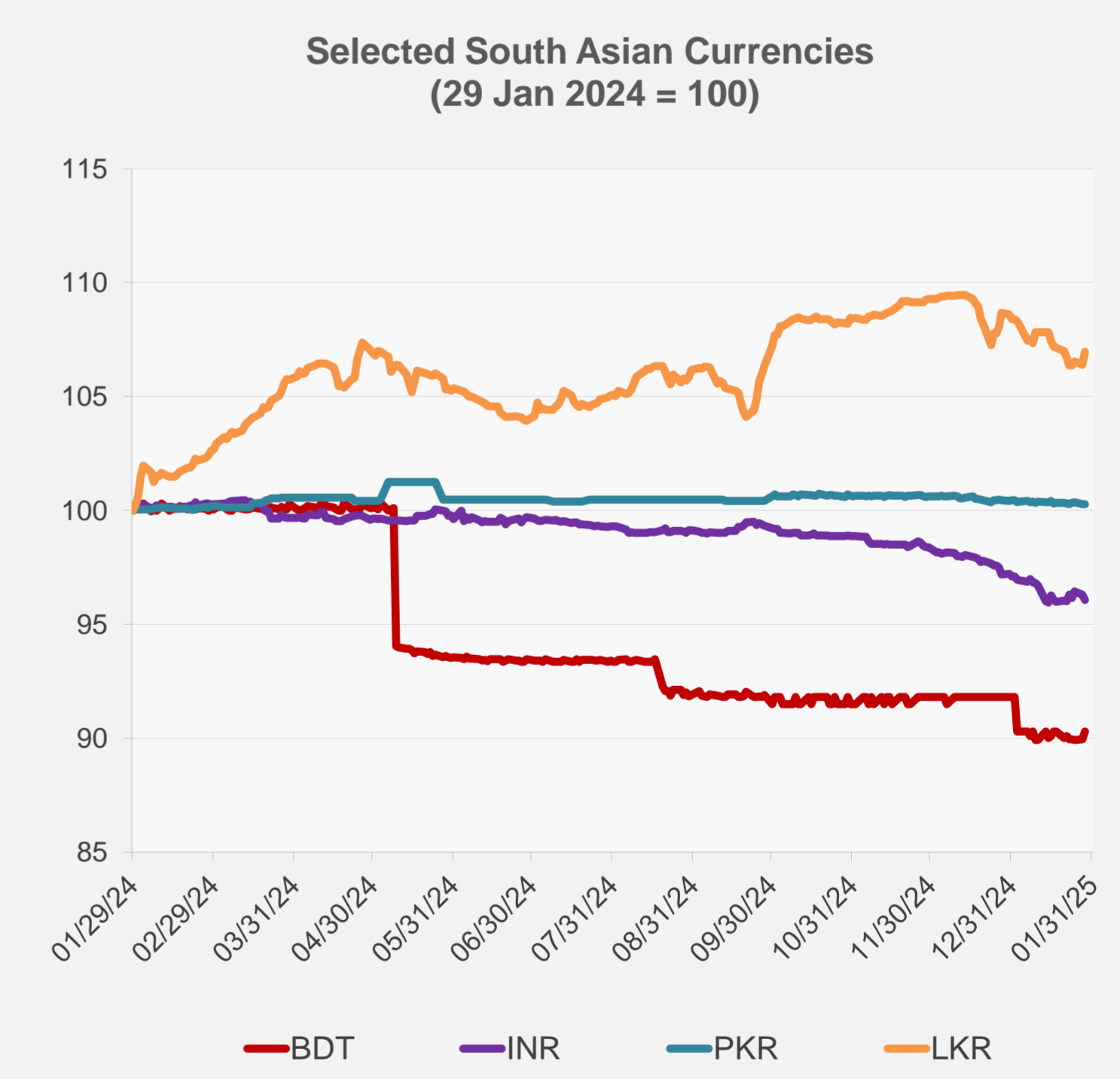
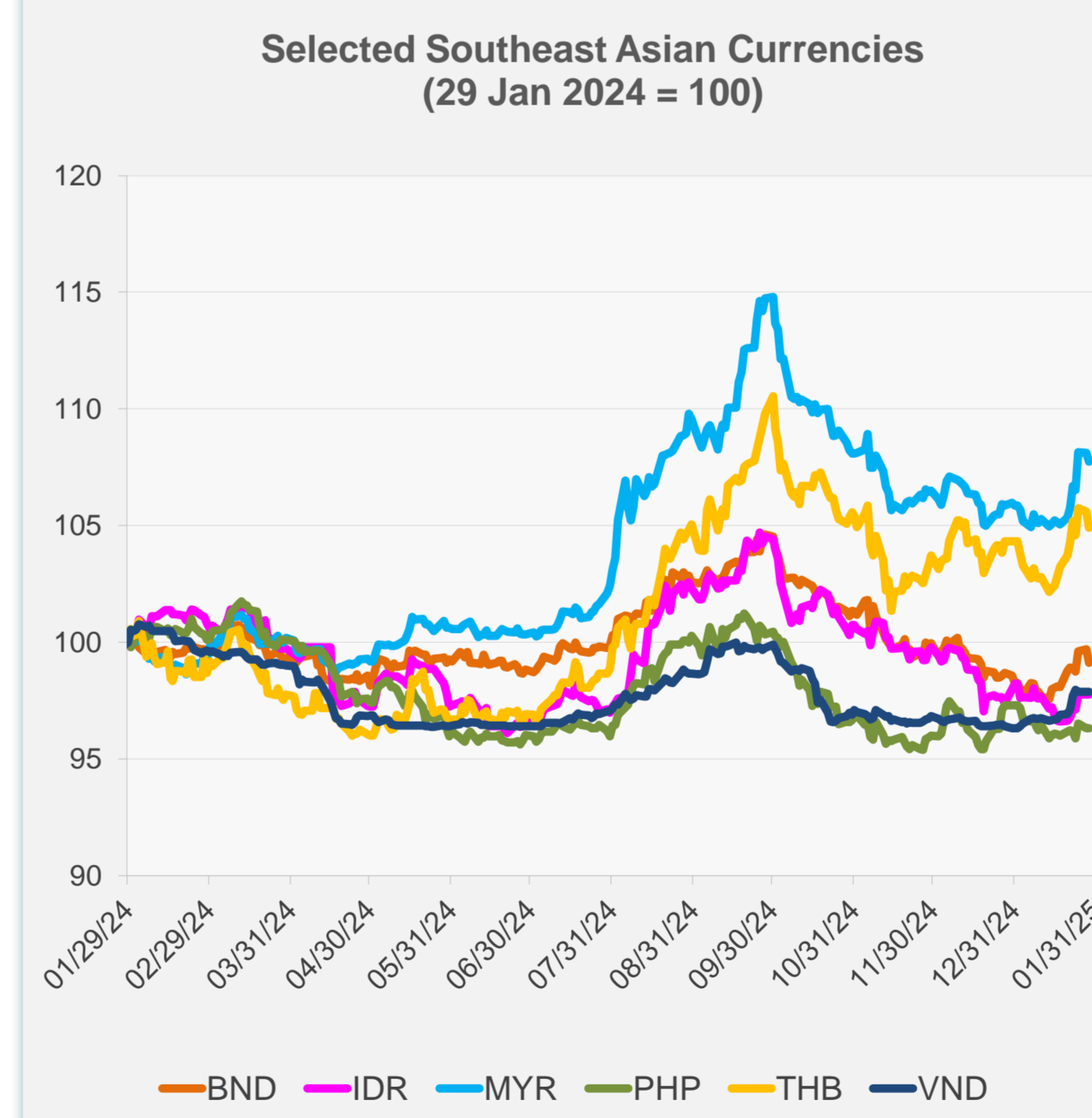


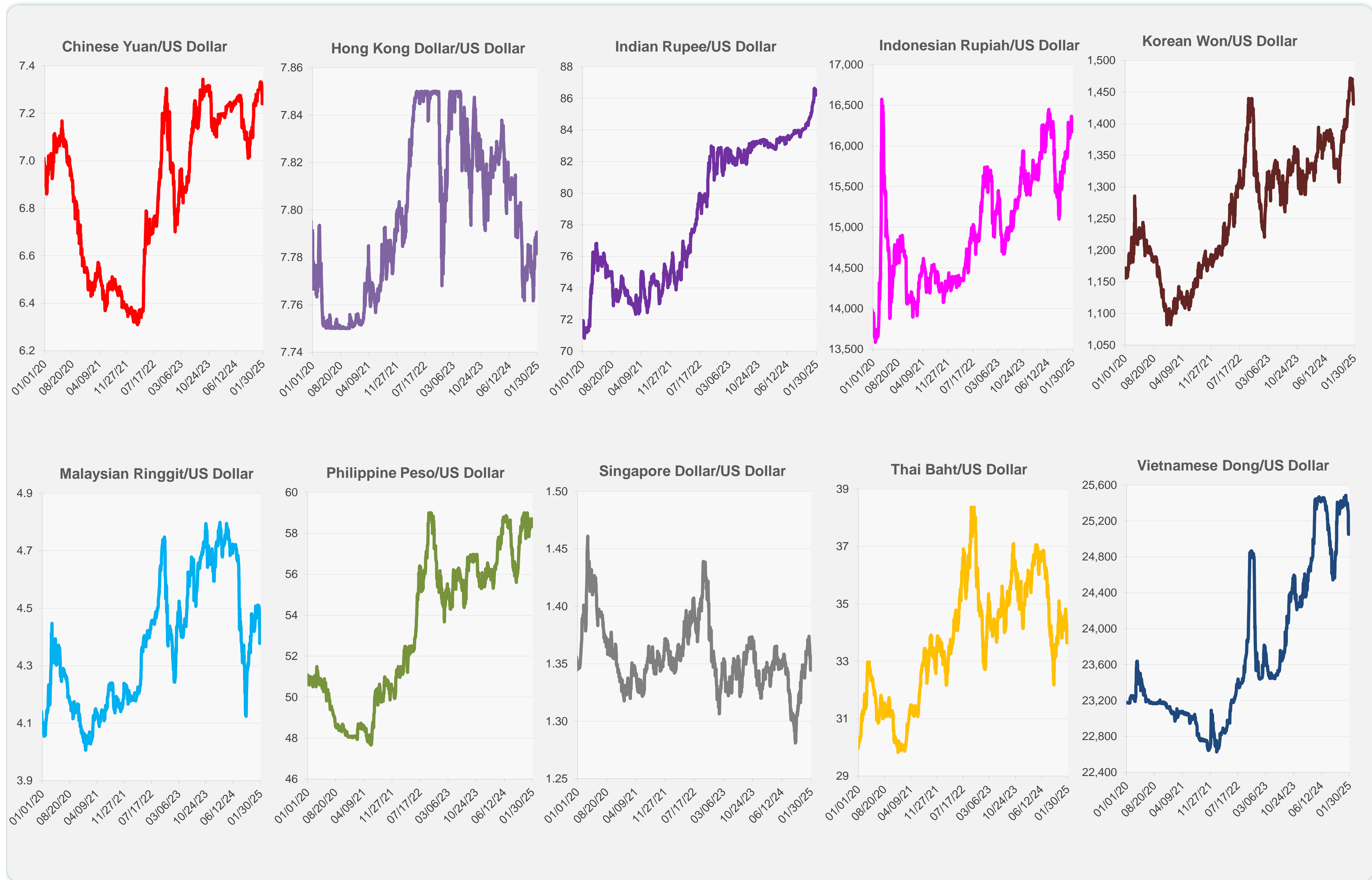
	Latest Closing	% change from Previous Day	% change from 01-Jan-25
Euro	0.96	-0.71	0.67
Japanese yen (JPY)	155.73	-0.88	0.92
Bangladeshi taka (BDT)	121.50	0.37	-1.65
Brunei dollar (BND)	1.35	-0.58	0.89
Chinese yuan (CNY)	7.26	0.00	0.48
Hong Kong dollar (HKD)	7.79	-0.04	-0.29
Indian rupee (INR)	86.53	-0.22	-1.06
Indonesian rupiah (IDR)	16,172.50	0.00	-0.48
Korean won (KRW)	1,431.20	0.00	2.86
Malaysian ringgit (MYR)	4.39	-0.33	1.79
Pakistan rupee (PKR)	278.85	0.00	-0.17
Philippine peso (PHP)	58.44	0.00	-1.01
Singapore dollar (SGD)	1.35	-0.58	0.89
Sri Lanka rupee (LKR)	296.95	0.52	-1.33
Taipei,China NT dollar (TWD)	32.73	0.00	0.17
Thai baht (THB)	33.91	-0.64	0.55
Vietnamese dong (VND)	25,078.00	0.00	1.62



NIE = Newly Industrialized Economies



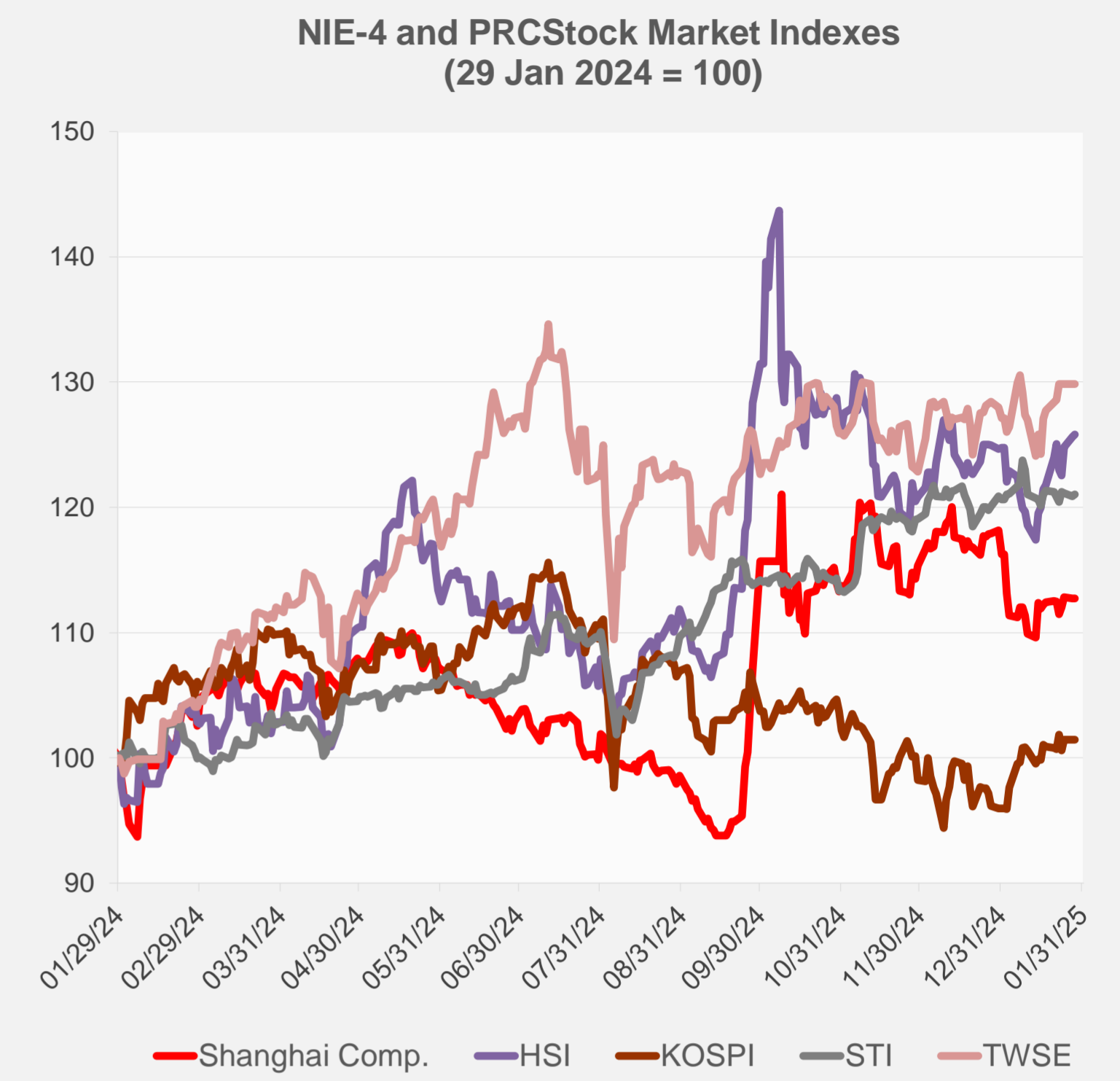
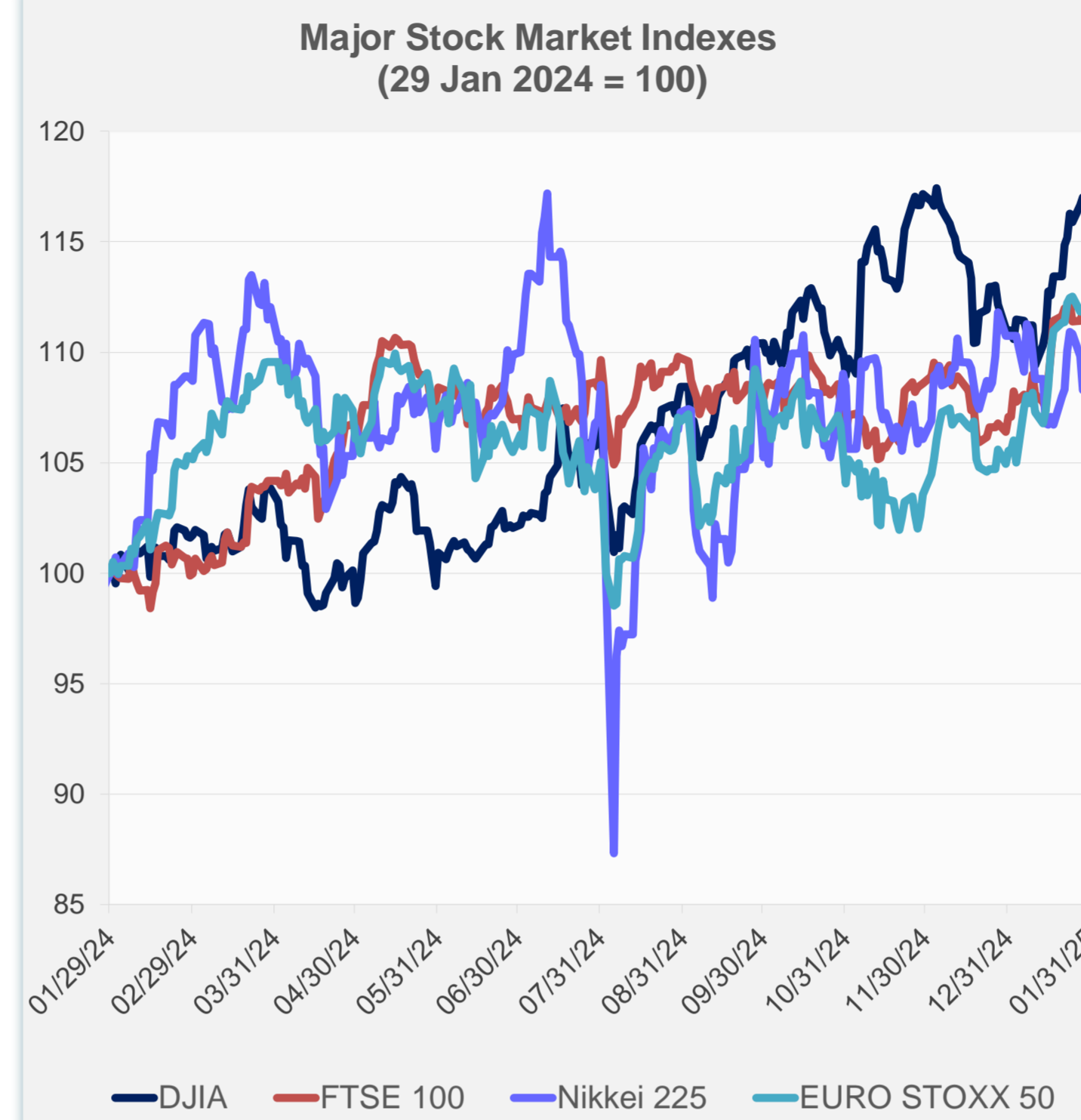
Note: Negative/Decreasing values indicate depreciation of local currency, and positive/increasing values indicate appreciation.  
Source: ADB calculations using data from Haver Analytics.



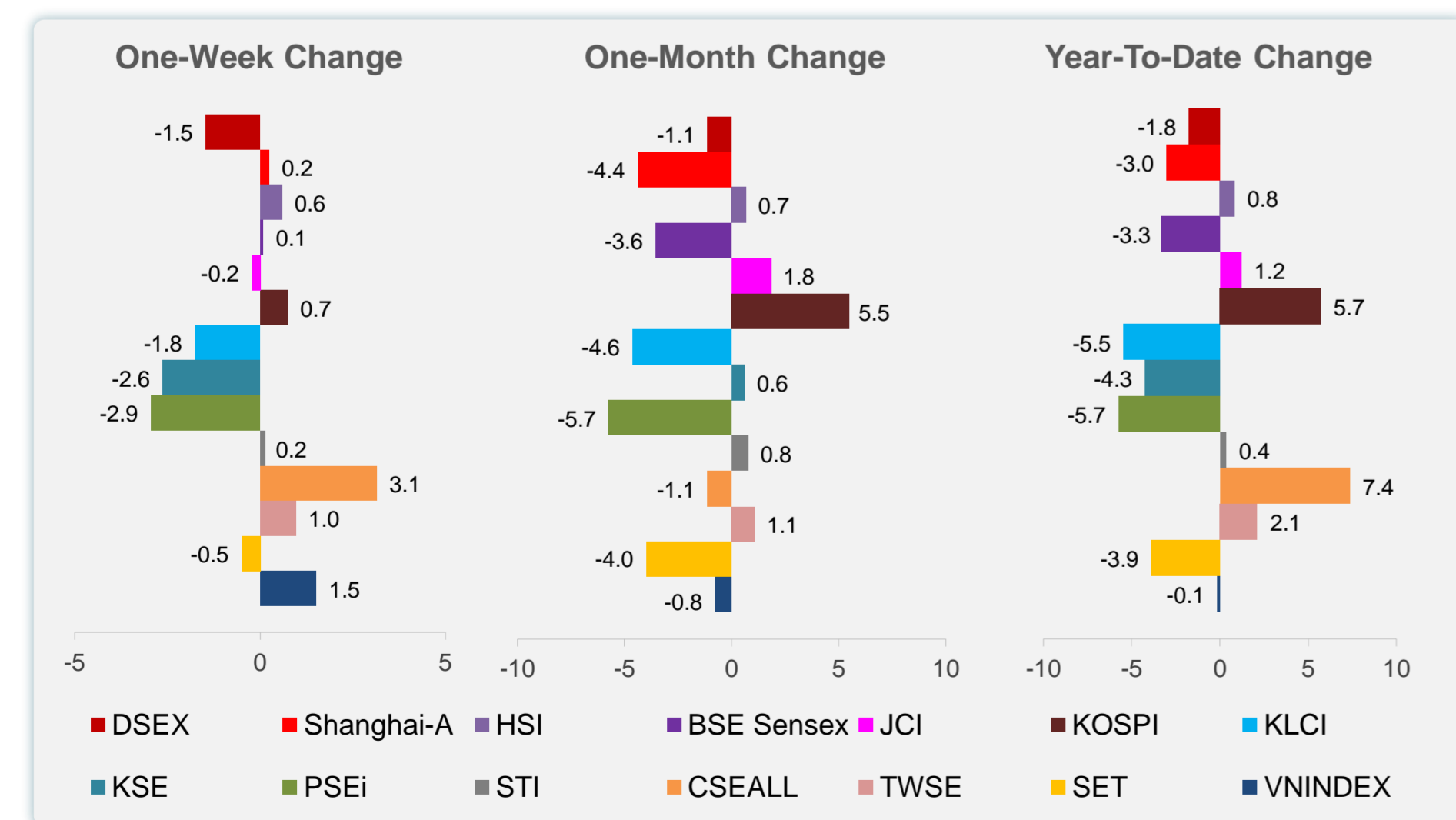
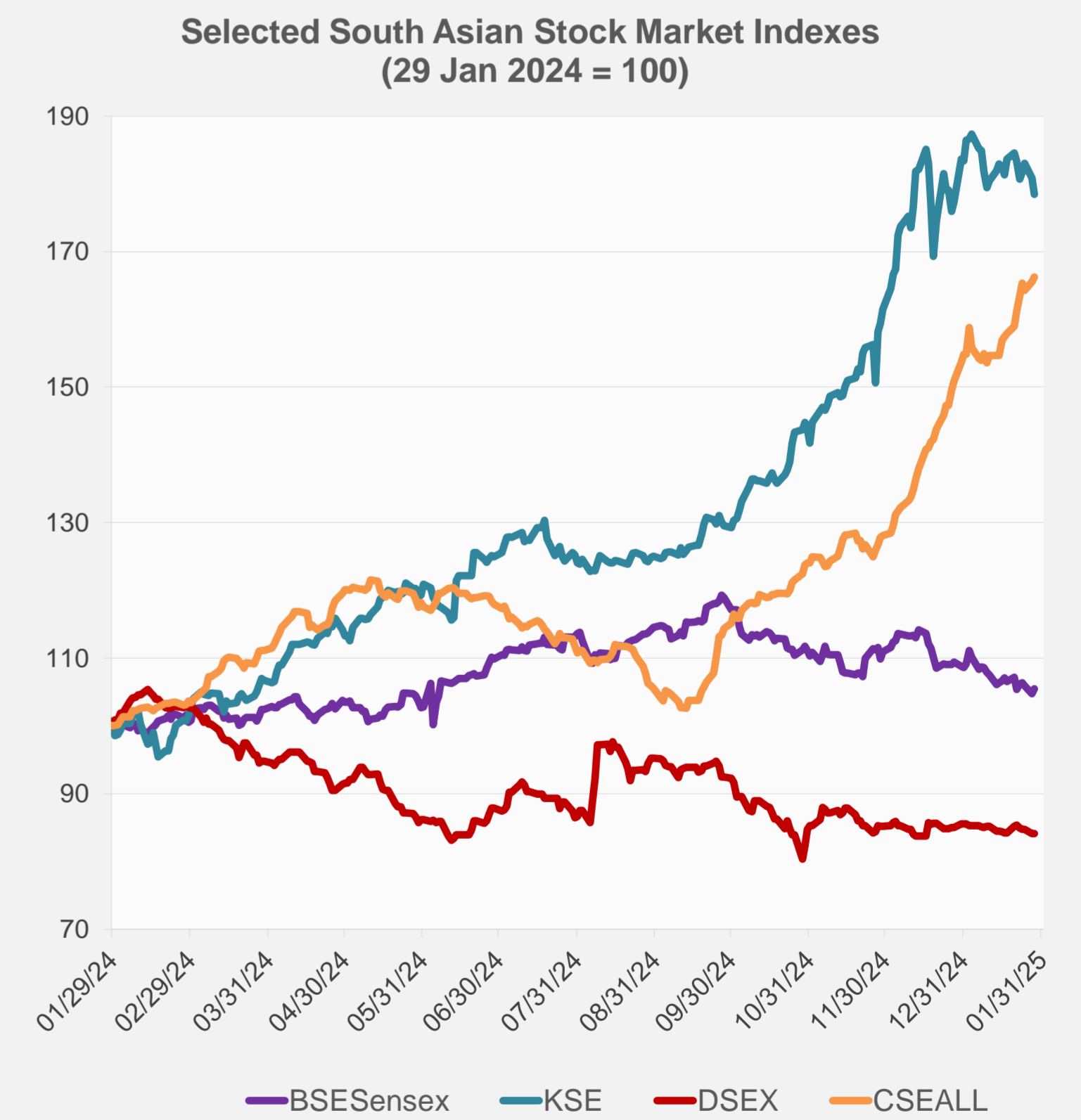
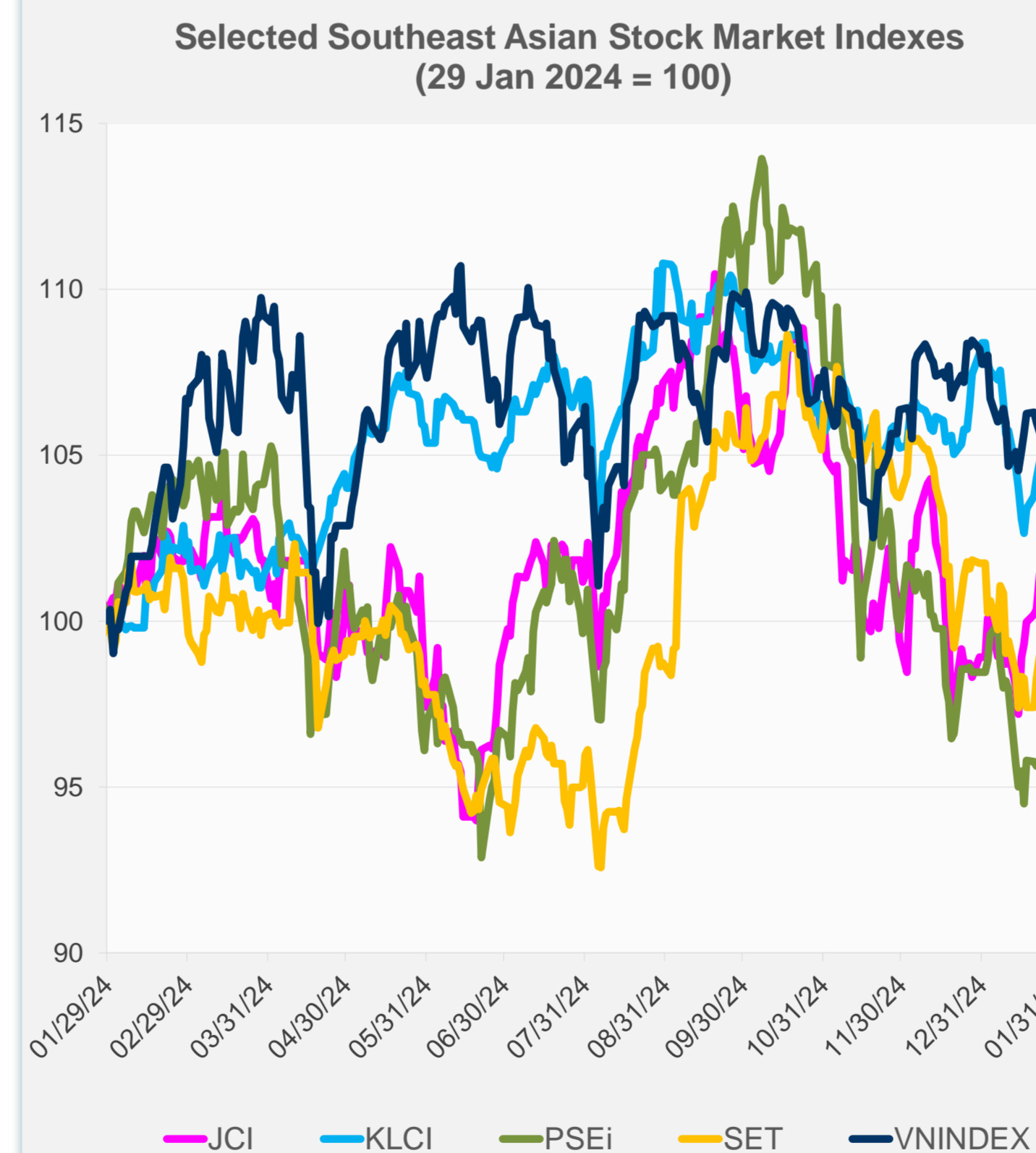
Source: Haver Analytics.



	Latest Closing	% change from Previous Day	% change from 01-Jan-25
US Dow Jones Ind Avg	44,850.35	0.31	5.42
US NASDAQ	19,733.59	2.03	2.19
US S&P 500	6,067.70	0.92	3.16
UK FTSE 100	8,533.87	0.35	4.42
EURO STOXX 50	5,195.71	0.14	6.12
Japan NIKKEI 225	39,016.87	-1.39	-2.20
Bangladesh DSEX	5,126.42	-0.07	-1.76
PRC Shanghai Comp.	3,250.60	0.00	-3.02
Hong Kong, China HSI	20,225.11	0.14	0.82
India BSE Sensex	75,901.41	0.71	-3.32
Indonesia JCI	7,166.06	0.00	1.22
Korea, Rep. of KOSPI	2,536.80	0.00	5.72
Malaysia KLCI	1,552.69	-0.40	-5.46
Pakistan KSE 100	112,030.36	-1.31	-4.25
Philippines PSEi	6,153.47	-0.70	-5.75
Singapore STI	3,801.07	0.11	0.36
Sri Lanka CSEALL	17,119.86	0.44	7.37
Taipei, China TWSE	23,525.41	0.00	2.13
Thailand SET	1,345.77	0.36	-3.89
Viet Nam VNINDEX	1,265.05	0.00	-0.14



NIE = Newly Industrialized Economies



Sources: ADB calculations using data from CEIC Data Company and Haver Analytics.



Sources: CEIC Data Company and Haver Analytics.

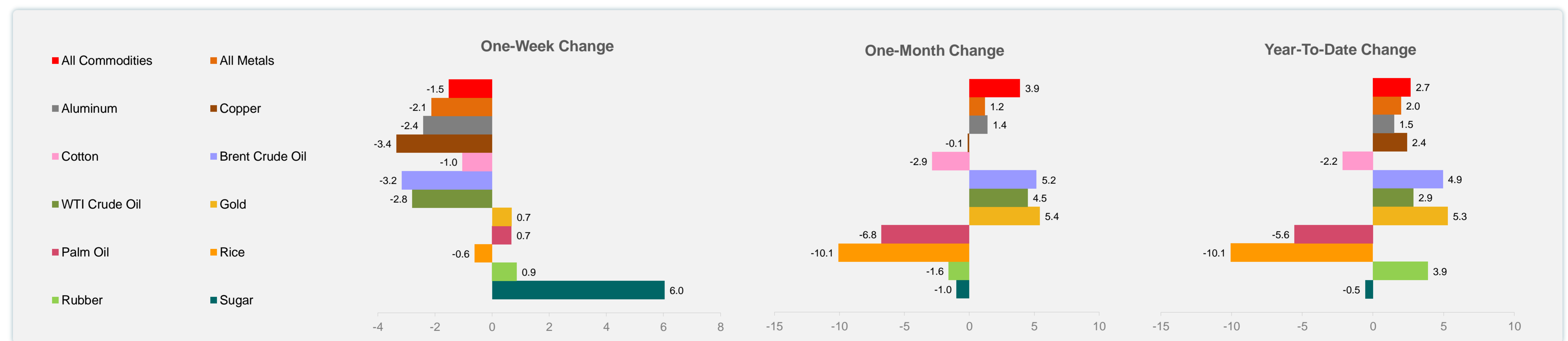
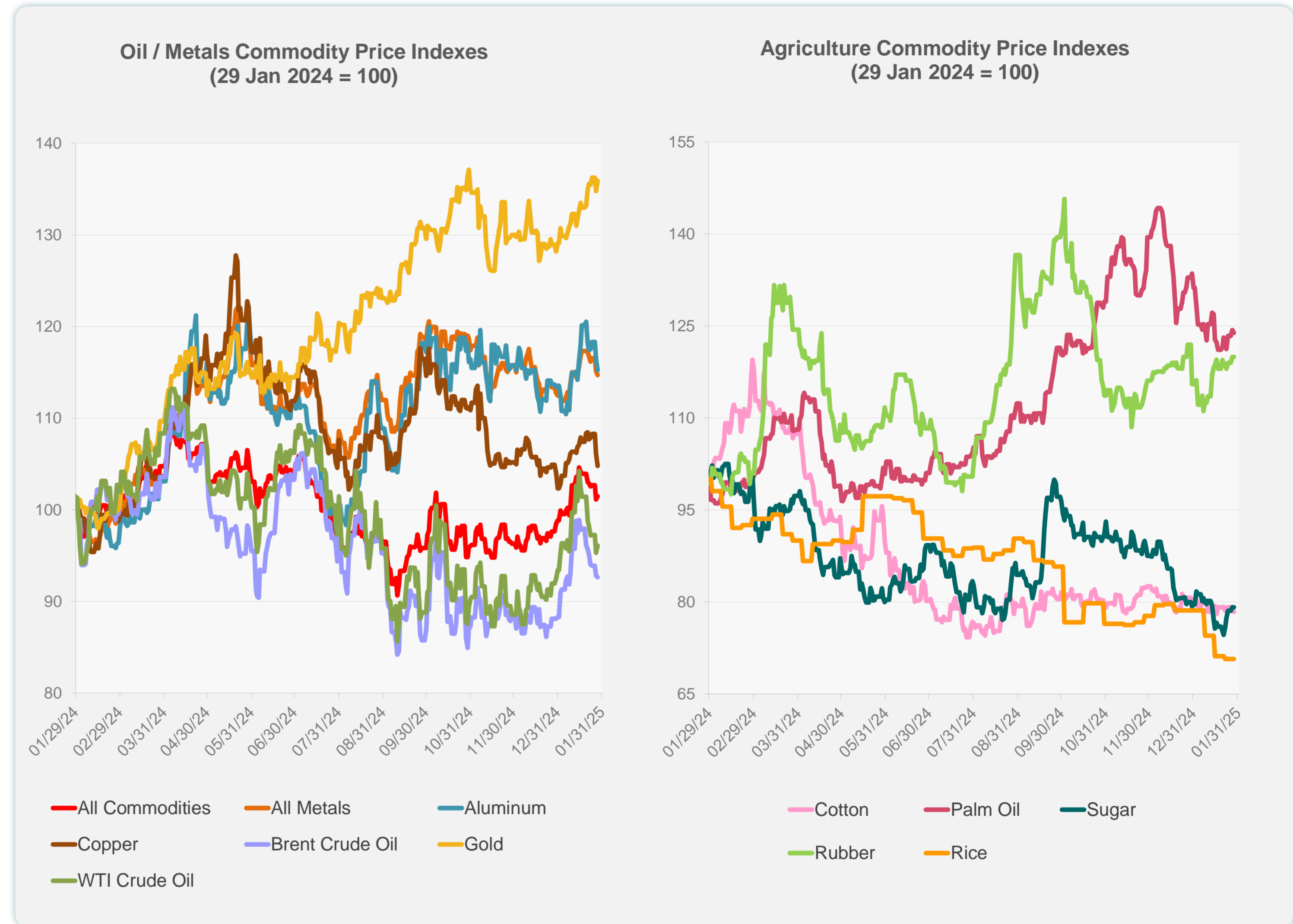


Daily Market Watch  
**COMMODITY PRICES**

29 January 2025, 9:00 AM Manila

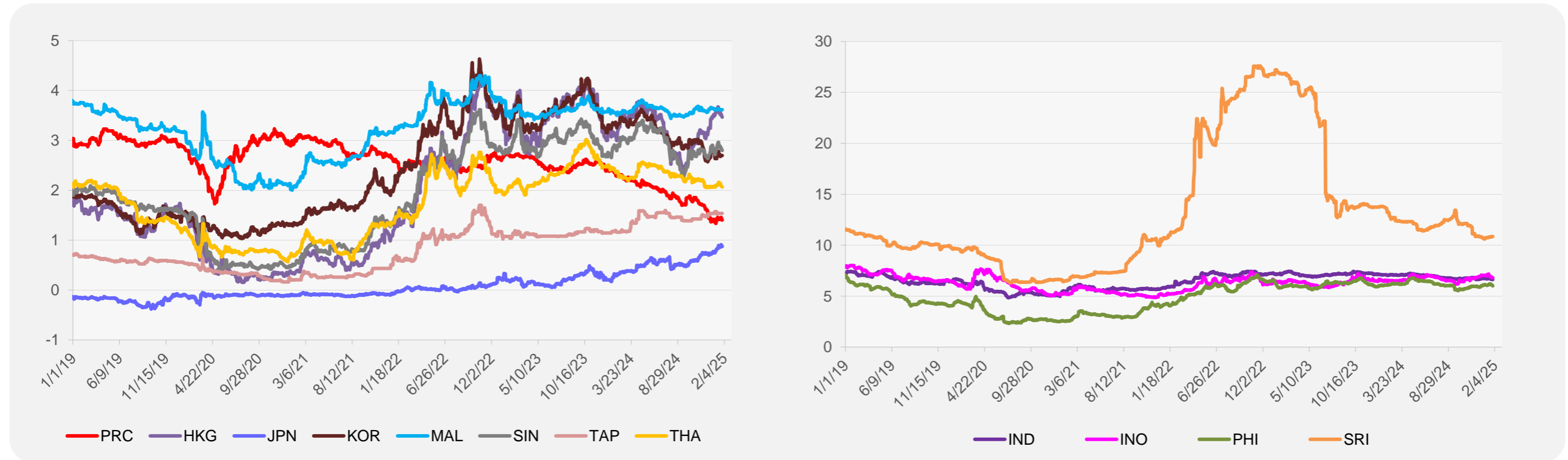
	Unit	Latest Closing	% change from Previous Day	% change from 01-Jan-25
S&P All Commodities	US\$	564.34	0.33	2.67
S&P All Metals	US\$	313.47	-0.35	1.98
Aluminum	US\$/metric ton	2,564.74	-1.07	1.50
Copper	US\$/metric ton	8,861.31	-1.23	2.41
Cotton	US cents/lb	64.48	-0.45	-2.15
Brent Crude Oil	US\$/barrel	77.77	-0.15	4.95
WTI Crude Oil	US\$/barrel	73.77	0.82	2.86
Gold	US\$/troy oz	2,763.51	0.83	5.30
Palm Oil	US\$/metric tonne	1,039.03	-0.34	-5.55
Rice <sup>1</sup>	US\$/metric ton	483.00	0.00	-10.06
Rubber <sup>2</sup>	US\$/kg	246.00	0.00	3.89
Sugar	US cents/lb	18.10	0.00	-0.55

<sup>1</sup> Latest closing price from 22 January 2025.  
<sup>2</sup> Singapore Exchange, Ribbed Smoked Sheet Rubber.

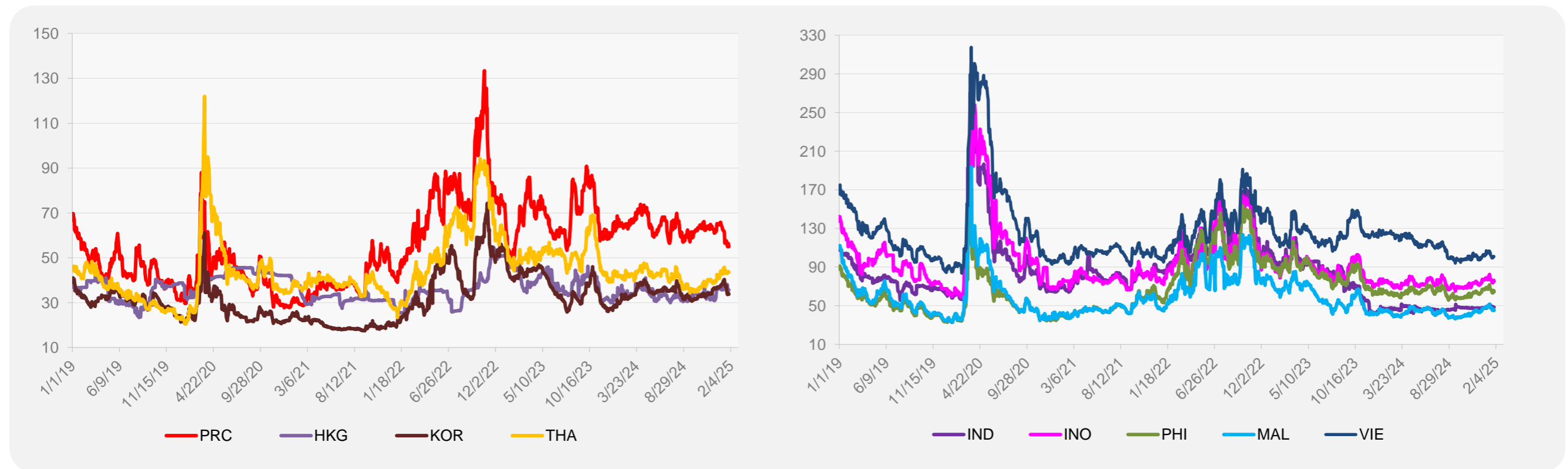


Source: ADB calculations using data from Bloomberg.

### 5-YEAR LOCAL CURRENCY GOVERNMENT BOND YIELDS (%)



### 5-YEAR CREDIT DEFAULT SWAP<sup>1</sup>



<sup>1</sup> In USD and based on sovereign bonds.  
Source: ADB calculations using data from Bloomberg.